



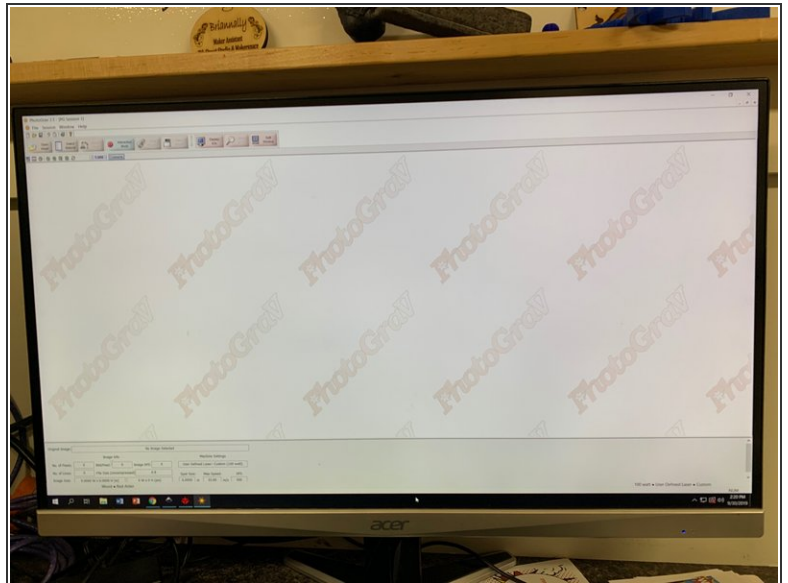
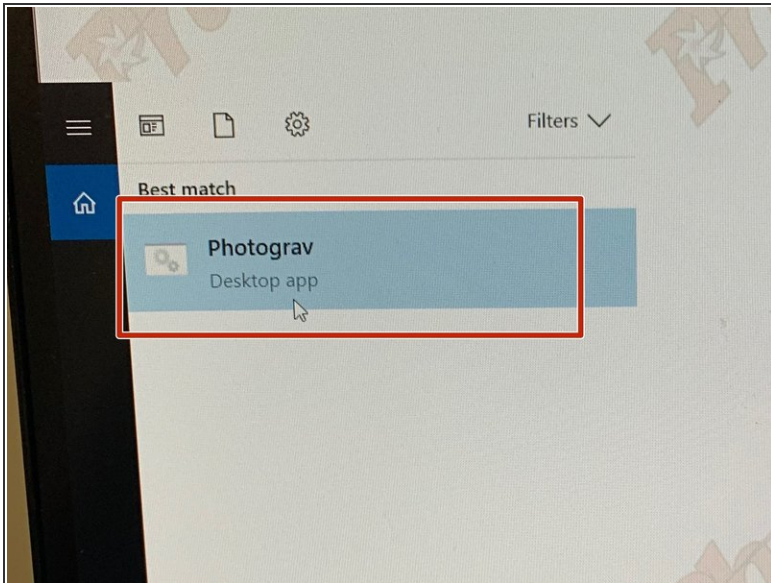
Laser Engraving Photos

Utilize this tutorial to learn how to laser engrave photographs on the BOSS Laser Cutter using the program Photograv.

Written By: Sabrina Shankar

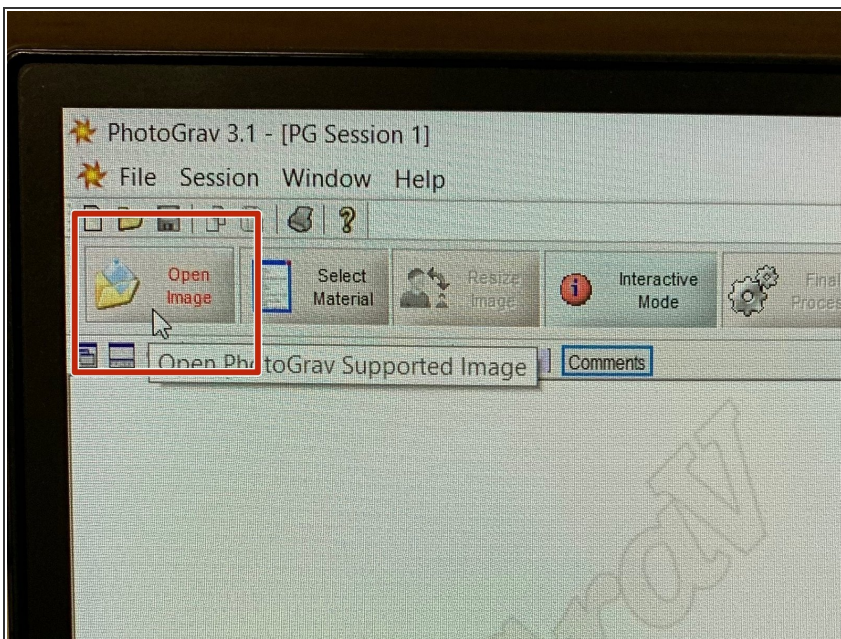


Step 1 — Photograv



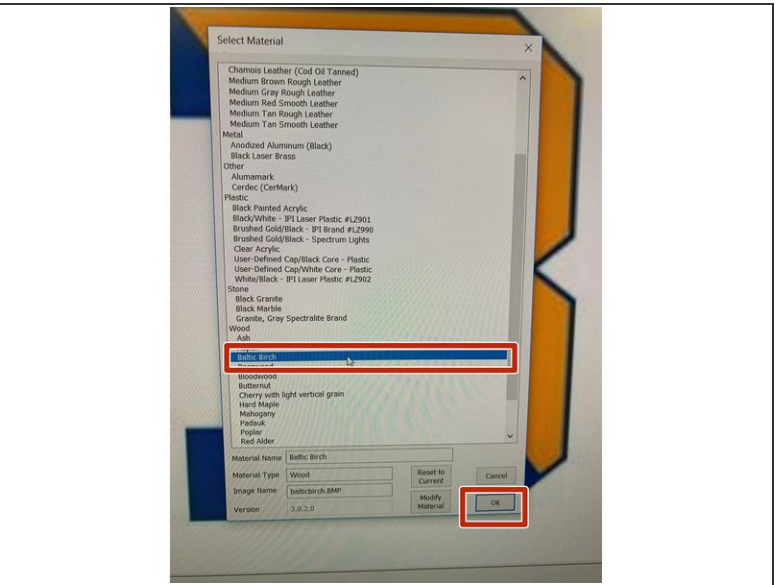
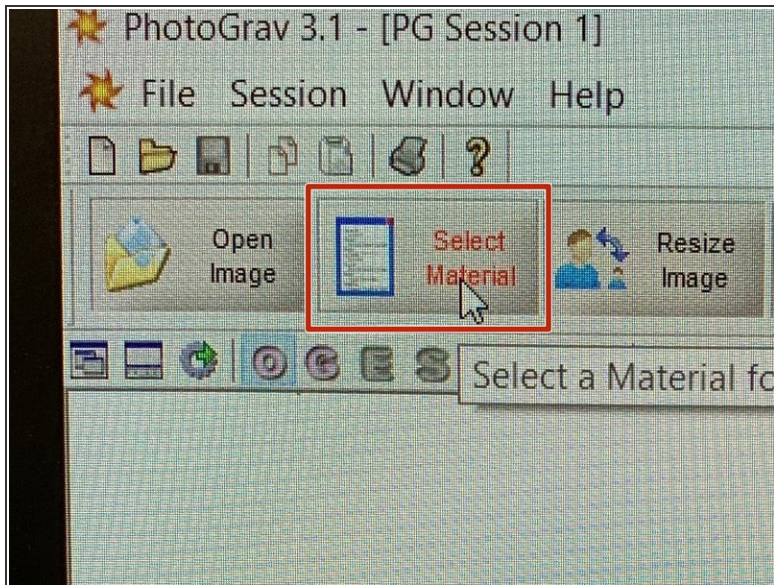
- Open the program “Photograv.”

Step 2 — Open Image



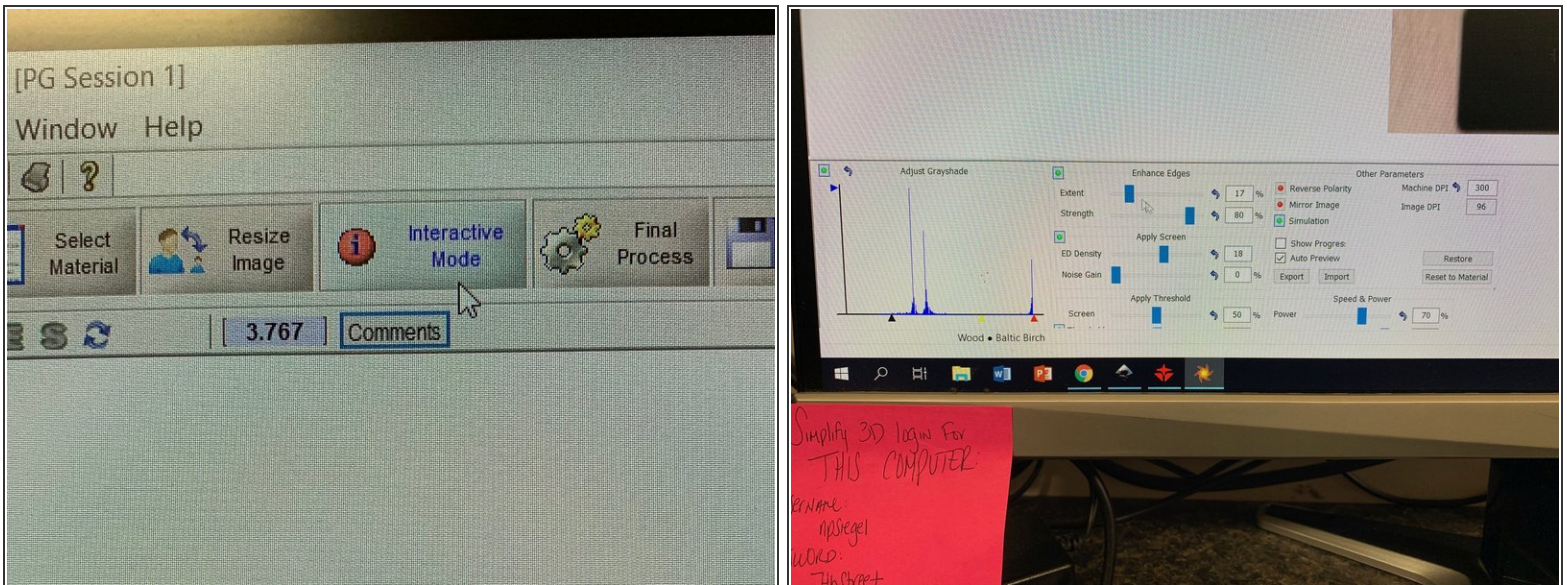
- Open image by clicking “Open Image” in the top left corner.

Step 3 — Select Material



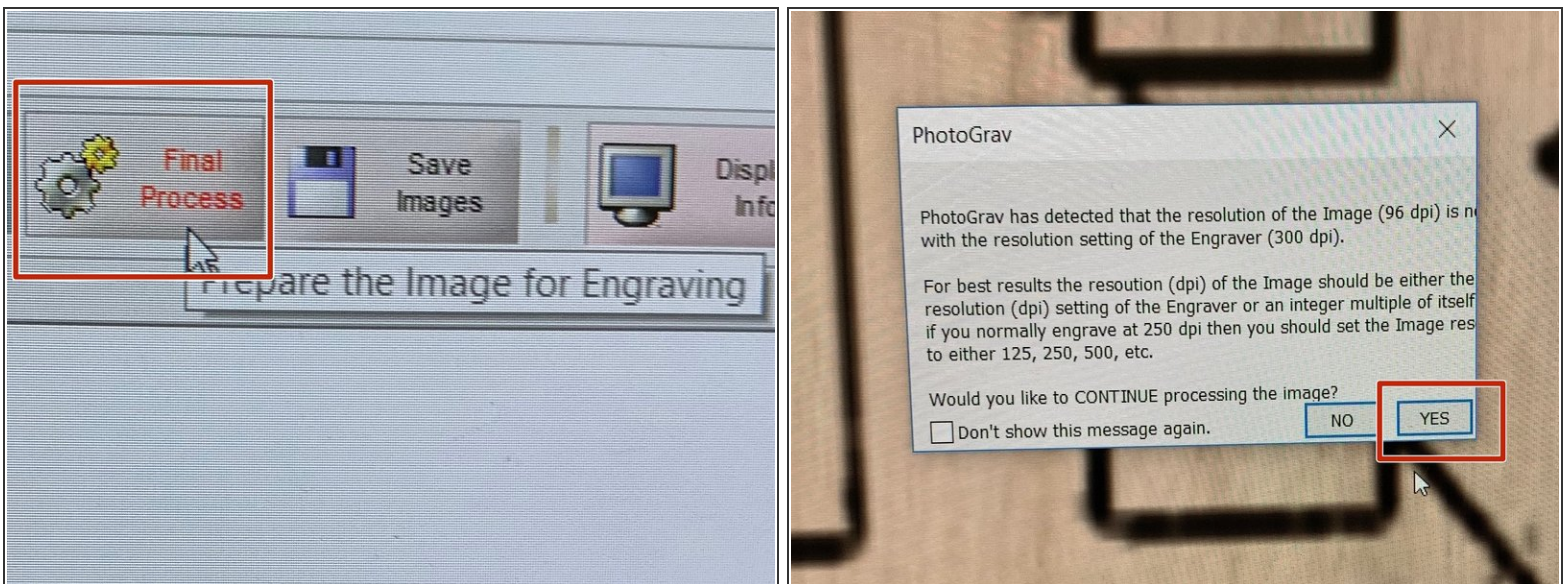
- “Select Material” in the top left corner
 - For this example, we will be using Baltic Birch.
- Once the material is selected, press “Okay.”

Step 4 — Interactive Mode



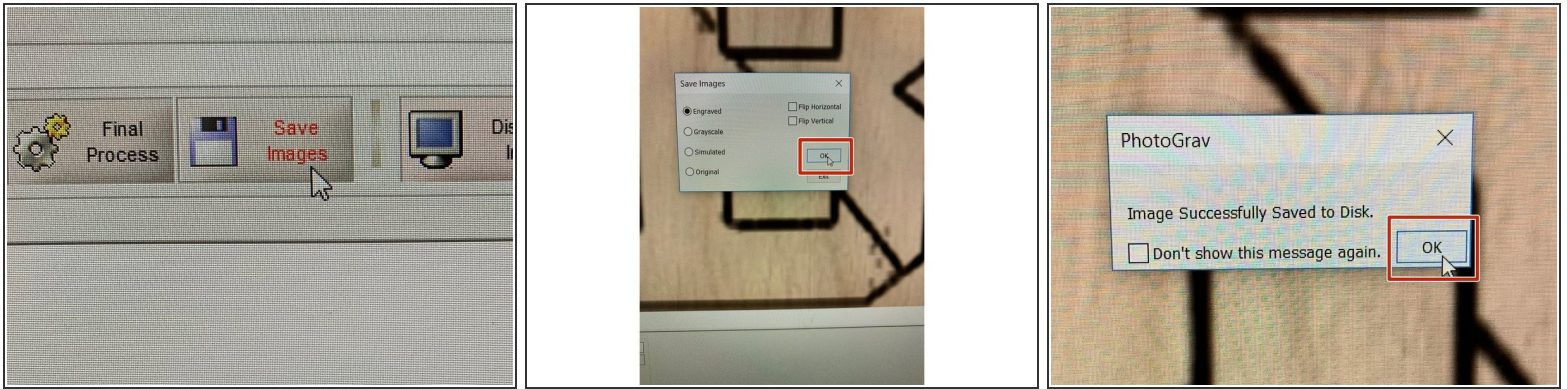
- Select “Interactive Mode” in the top toolbar. At the bottom of the screen, begin adjusting different tool settings.
- ❗ Typically you will be changing the Speed and Power based on the material you're using.

Step 5 — Final Process



- Once you're satisfied with the way your image looks, go to “Final Process” in the top toolbar. Press “yes” when a screen pops up.

Step 6 — Save Images



- Go to “Save Images” and save your image as “Engrave.” Press “Okay.”
- When it says “Successfully Saved,” press “Okay.”
- Your file is now ready to be imported into RD Works. Continue with the BOSS Laser Cutter tutorial.